

creativity

Your toolkit for business creativity



- Control Panel Accessories
- Packing Machine Components
- Conveyor Products



# COMPANY PROFILE

## About us

We are located in MUMBAI, the financial capital of INDIA. Company specializes in the Design and Manufacture of high-quality Control Panel Accessories, Conveyor Products and Packing Machine Components with a commitment to innovation and precision engineering. The company serves a diverse range of industrial product with best quality products & great service.

## What we do

1. Innovation in combination with unique design as per clients requirements.
2. Technological background with decades of experience.
3. Optimized and widest product range of standard machine elements & driver by the market.
4. Worldwide distribution network.
5. Fastest TAT with fill stock availability.

## Why us

Quality assurance our commitment to quality is reflected in our rigorous testing protocols and adherence to international manufacturing standards. We continuously invest in research and development to innovate and improve our product offering. High quality standards and our target oriented thinking aimed at ensuring an optimal utilization of our products, CHANNEL INDUSTRIES is firmly established as a proficient partner helping to meet market requirements. We welcome any enquiry for both domestic market as well as international market. Material selection is a prime concern while entering into the manufacturing process.

# Table Of Contents

Panel Locks	01
Canopy & L-Handle Locks	02
Rod Control Locks	03
Combination & Rod Control Locks	04
Panel Keys & Gaskets	05
Cold Storage Locks & Hinges	06
One Touch Fasteners	07
Plungers & Door Catchers	08
Clamps	09
Clamps, Latches	10
Concealed Hinges	11
Heavy Duty Flat Hinges	12
Flat Hinges	13
Metal Hinges	14
Hinges & AHU Accessories	15
Handles	16
Pull Handles	17
Hand Wheels & Indicators	18
Knobs	19
Conveyor Side Brackets & Guides	20
Conveyor Accessories	21
Leveling Elements	22
Foot Mount & Castor Wheels	23

Your  
**TOOLKIT**  
For  
**BUSINESS  
CREATIVITY**

**Die-Cast Round Pin**



**LK-01-A**

**Die-Cast Triangle**



**LK-02-A**

**Die-Cast Square**



**LK-03-A**

**Die-Cast Minus**



**LK-04-A**

**Die-Cast Allen key**



**LK-05**

**Godrej Eco Lock**



**LK-06**

**Die-Cast Long Barrel**



**LK-07**

**S.S. Square Long Barrel**



**LK-08**

*New*

**S.S. Minus**



**LK-09**

*New*

**S.S. Square**



**LK-10**

*New*

**S.S. Triangle**



**LK-11**

*New*

**S.S. Round Pin**



**LK-41**

*New*

**Poly Mini Knob**



**LK-44**

**Poly Small Wing**



**LK-13**

**Die-Cast Small Wing**



**LK-14**

**Poly Big Wing**



**LK-15-A**

**Poly Big Wing**



**LK-15-B**

**S.S. Knob Lock**



**LK-15-C**

*New*

**Die-Cast Lockable**



**LK-16**

**S.S. Lockable**



**LK-16-B**

*New*

**Die-Cast Scooter Key**



**LK-18**

**Die-Cast Rittal Lock**



**LK-21**

**S.S. Rittal Lock**



**LK-21-B**

**Reliance Eco**



**LK-22**

**Reliance Eco 4 Hole**



**LK-23**

**Poly Head Round Pin**



**LK-26**

**Die-Cast T-Handle**



**LK-29**

**Die-Cast T-Handle**



**LK-30**

**Die-Cast L-Handle**



**LK-31**

**Die-Cast L-Handle**



**LK-32-A**

**Die-Cast L-Handle**



**LK-32-B**

**Die-Cast L-Handle**



**LK-32-C**

**Die-Cast L-Handle**



**LK-32-D**

**Die-Cast L-Handle**



**LK-32-E**

**DC Push Lock**



**LK-33**

**Die-Cast Single Point**



**LK-34**

**Poly 3-Point Lock**



**LK-35**

**M.S. Canopy Lock**



**LK-37**

**S.S. Canopy Lock**



**LK-38**

**T-Type Canopy Lock**



**LK-39**

**Small Canopy Lock**



**LK-54**

**Small Canopy Lock M.S.**



**LK-55**

**Small Canopy Lock S.S.**



**LK-55-B**

**Die Cast 3-Point Lock**



**LK-36**

**Die Cast 3-Point Lock**



**LK-46-1**

**Poly 3-Point Lock**



**LK-48**

**Poly 3-Point Lock**



**LK-52**

**Die-Cast Single Point**



**LK-56**

**Die-Cast Trigger Latch**



**LK-57**

**Die-Cast 3 Point Lock**



**LK-58**

**Die-Cast 3-Point Lock**



**LK-59**

**Die-Cast 3-Point Lock**



**LK-60**

**Die-Cast 3-Point Lock**



*New*

**LK-61**

**L-Handle 3-Point Lock**



*New*

**LK-62**

**S.S. 3 Point Lock**



*New*

**LK-63**

**Die-Cast Combination Lock**



*New*

**LK-64**

**Poly Combination Lock**



*New*

**LK-65**

**Poly Combination Lock**



*New*

**LK-66**

**Poly Combination Lock**



*New*

**LK-67**

**Die-Cast Combination Lock**



*New*

**LK-68**

**Digital Keypad Lock**



*New*

**LK-69**

**Poly Star Knob Lock**



*New*

**LK-70**

**Poly Star Knob Lock**



*New*

**LK-71**

**Die-Cast Compression Lock**



*New*

**LK-72**

**DC Key Round Pin**



**KY-01**

**DC Key Triangle**



**KY-02-A**

**DC Key Triangle**



**KY-02-B**

**DC Key Square**



**KY-03**

**Pvc Key**



**KY-04**

**M.S. Key**



**KY-06**

**M.S. Eco Key**



**KY-07**

**DC 4 Way Key**



**KY-08**

**M.S. Key Triangle**



**KY-10**

**M.S. Allen Key**



**KY.12**

**L-Handle Key**



**KY.13**

*New*

**S.S.304 Multi Key**



**KY.14**

**Top Bubble Gasket**



**RG-01**

**Side Bubble Gasket**



**RG-02**

**'U' Gasket**



**RG-03**

**'U' Gasket**



**RG-03-I**

**Canopy Gasket**



**RG-05**

**D Gasket**



**RG-06**

**Glass Beading Gasket**



**RG-07**

*New*

**Gasket Tape**



**EL-14**



**Cold Storage Door Lock**



**CLK-01**

**Cold Storage Door Lock**



**CLK-02 (9 Inches)**

**Cold Storage Door Lock**



**CLK-03 (12 Inches)**

**Cold Storage Door Lock (S.S.304)**



**CLK-04**

**Cold Storage Door Lock**



**CLK-05**

**Cold Storage Door Lock**



**CLK-06**

**Cold Storage Door Hinges**



**CHS-01-A (250MM)**

**Cold Storage Door Hinges**



**CHS-1-B (335MM)**

**Push Button Fastener**



*New*

**CLK-01**

**Push Button Fastener**



*New*

**CLK-02 (9 Inches)**

**Quarter Turn Fastener**



*New*

**CLK-03 (12 Inches)**

**Quarter Turn Fastener**



*New*

**CLK-04**

**Quarter Turn Lock Fastener**



*New*

**CLK-05**

**Receptacle Accessories**



*New*

**OTF-11**

**Receptacle Accessories**



*New*

**OTF-12**

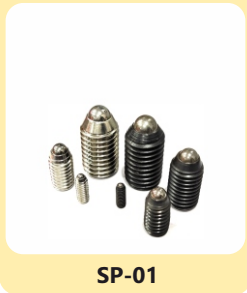
**Receptacle Accessories**



*New*

**OTF-13**

**Ball Plunger(M.S./ S.S.)**



**SP-01**

**Pin Plunger (S.S.)**



**SP-02**

**Index Plunger (M.S./S.S.)**



**SP-03**

**Index Plunger (M.S./S.S.)**



**SP-05**

**Index Plunger**



**SP-06**

**L Indexing Plunger**



**SP-07**

**Screw Fit Plunger ( Poly)**



**SP-08**

**Press Fit Plunger ( Poly)**



**SP-09**

**Press Fit Plunger ( S.S.)**



**SP-09-B**

**Index Plunger**



**SP-10**

**T-Type Index Plunger**



**SP-11**

**Snap Latch**



**SL-01**

**Poly Door Catcher**



**DC-01**

**Metal Door Catcher**



**DC-03**

Clamp 90mm (M.S./S.S.)



CL-01-A

Clamp 102mm (M.S./S.S.)



CL-01-B

Clamp 54mm (M.S./S.S.)



CL-02-A

Clamp 54mm (M.S./S.S.)



CL-02-B

Clamp 100mm (M.S./S.S.)



CL-03

Clamp 100mm (M.S./S.S.)



CL-04

Clamp 125mm (M.S.)



CL-05

Clamp (M.S./S.S.)



CL-06

Clamp (M.S./S.S.)



CL-07

Spring Clamp (M.S./S.S.)



CL-08-A

Spring Clamp (M.S./S.S.)



CL-08-B

Clamp 110mm (M.S./S.S.)



CL-09

Spring Clamp (M.S./S.S.)



*New*

CL-11

Spring Clamp (M.S./S.S.)



*New*

CL-12-A

Spring Clamp (M.S./S.S.)



*New*

CL-12-B

Small Clamp (M.S./ S.S.)



*New*

CL-13

Adjustable Clamp 70mm



*New*

CL-14

Clamp 115mm (M.S.)



*New*

CL-15

Clamp 125mm (M.S.)



*New*

CL-16

Adjustable Latch 10034



*New*

LH.01-A

Small Adjustable Latch 5430



*New*

LH.01-B

Die-Cast Latch



*New*

LH-02

S.S. Latch



*New*

LH-03

Bracket for Latch



*New*

LH-04

**Die-Cast Lift Off**



**HS-01**

**M.S. Siemens**



**HS-02-A**

**M.S. Siemens**



**HS-02-B**

**M.S. Siemens**



**HS-02-C**

**M.S. Siemens**



**HS-03**

**M.S. Lift Off**



**HS-04**

**M.S. Concealed**



**HS-06-A**

**M.S. Concealed**



**HS-06-B**

**M.S./S.S. Concealed**



**HS-07**

**Spring Type(S.S./M.S.)**



**HS-08**

**Spring Type**



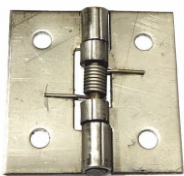
**HS-09**

**L & T (M.S./S.S.)**



**HS-10**

**S.S. Spring**



**HS-11**

**Capsule-Type(S.S./M.S.)**



**HS-12**

**L & T M.S./ S.S.**



**HS-13**

**Z-TYPE**



**HS-13-Z**

**S.S. Bolero**



**HS-15**

**S.S. 6 Hole 038**



**HS-16**

**S.S. 6 Hole 052**



**HS-17**

**M.S. Lift Off**



**HS-18**

**M.S./S.S. Lift Off**



**HS-19**

**S.S. Lift Off**



**HS-19-B**

**S.S. 056(Bolted)**



**HS-20**

**S.S. 056(4 Hole)**



**HS-21**

**S.S. Lift Off 041**



**HS-22**

**Die-Cast Generator**



**HS-23**

**Die-Cast Rod**



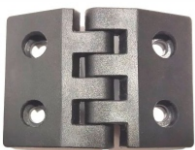
**HS-24**

**Poly Profile**



**HS-25**

**Poly 7048/4530**



**HS-26**

**Poly 4048/ 2630**



**HS-50**

**Poly 3048/ 1230**



**HS-51**

**Poly 5070**



**HS-27**

**Poly 4849**



**HS-28**

**Poly 4 Hole**



**HS-29**

**Die-Cast/S.S. 4 Hole**



**HS-30**

**Die-Cast 50\*63**



**HS-60**

**Die-Cast 50\*76**



**HS-61**

**Die-Cast 60\*117**



**HS-62**

**Die-Cast Bolted**



**HS-31-A**

**Die-Cast HS**



**HS-31-B**

**Die-Cast Rittal**



**HS-32-A**

**Mild Steel Rittal**



**HS-32-B**

**S.S. Cast Rittal**



**HS-32-C**

**M.S./S.S. Rittal**



**HS-32-D**

**Polyamide 046**



**HS-33**

**M.S./ S.S. Hinges**



**HS-35**

**M.S. Hinges**



**HS-37**

**M.S./ S.S. Hinges**



**HS-38**



**S.S. Lift Off Hinges**



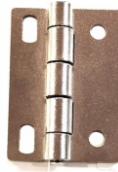
**HS-40-A**

**S.S. Butt Hinges**



**HS-40-B**

**M.S./ S.S. Hinges**



**HS-41**

**M.S./ S.S. Hinges**



**HS-42**

**M.S./ S.S Concealed**



**HS-43**

**S.S.304 Piano Hinges**



**HS-44**

**Metal Hinges**



**HS-45**

**M.S. Hinges**



**HS-52**

**S.S. 5036**



**HS-53**

**S.S. Hinges**



**HS-54**

**Die-Cast 60\*49**



**HS-68**

**Die-Cast 50\*40**



**HS-69**

**Die-Cast 54\*40 Bolted**



**HS-70**

**Damper Hinge 30mm**



**HS-71**

**Damper Hinge 50mm**



**HS-72**

**Bent Right Angle Hinge**



**HS-73**

**DC Positioning Hinge**



**HS-74**

**Brass 65\*50**



**HS-75**

**S.S. Lift Off Hinge**



**HS-76**

**DC Lift Off Hinge**



**HS-77**

**DC Lift Off Hinge**



**HS-78**

**M.S. Concealed**



**HS-79**

**S.S. 4080**



**HS-80**

**S.S. 2578**



**HS-81**

**Poly Profile**



**HS-82**

**S.S. 5050**



**HS-83**

**M.S. 90 Degree**



**HS-84**

**Spring Type**



**HS-108**

**AHU Handle Lock**



**AHU-01**

**AHU Handle Lock**



**AHU-02**

**AHU Handle Lock**



**AHU-03**

**Poly AHU Hinge**



**AHU-04**

**Poly 120**



**HL-02**

**Poly 150/120/92**



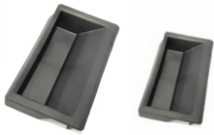
**HL-03**

**ALU Die-Cast**



**HL-27**

**Pocket Handle (94/110)**



**HL-05**

**Pocket Handle (S.S.)**



**HL-26**

**M.S./S.S. Crate**



**HL-07**

**Die-Cast Adjustable**



**HL-08**

**Polyamide Adjustable**



**HL-09**

**Polyamide Crank**



**HL-11-A**

**Polyamide Crank**



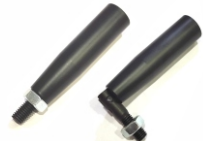
**HL-11-B**

**Poly Revolving Handle**



**HL-12-A**

**M.S. Revolving Handle**



**HL-12-C**

**Revolving Handle**



**HL-12-D**

**Metal Revolving Handle**



**HL-12-E**

**Pipe Handle (OD 32mm)**



**HL-13-A**

**Pipe Handle (OD 23mm)**



*New*

**HL-13-B**

**Pipe Handle (OD 25mm)**



**HL-14**

**Poly 110(Insert)**



**HL-15**

**Poly 150/117/85(Insert)**



**HL-16**

**U-Handle Folding 90/ 100**



**HL-17**

**U-Handle (M.S./S.S.)**



*New*

**HL-18**

**U-Handle Folding 75mm**



*New*

**HL-19**

**Poly Handle**



*New*

**HL-20**

**Strap Handle**



*New*

**HL-21**

**Pipe Handle (OD 25mm)**



*New*

**HL-22**

**Pipe Handle (OD 25mm)**



*New*

**HL-23**

**ABS Handle (160)**



*New*

**HL-24**

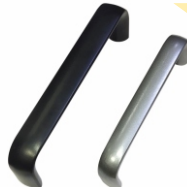
**U-Handle Folding (S.S.)**



*New*

**HL-25**

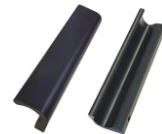
**Aluminium U-Handle**



*New*

**HL-28**

**ALU Pull Handle (92/120)**



*New*

**HL-29**

**DC/Poly 2 Spoke (Foldaway)**



**HW-01**

**DC/ Poly 2 Spoke**



**HW-14**

**Plastic 3 Spoke**



**HW-02**

**Polyamide Solid(Foldable)**



**HW-03**

**Aluminium 3 Spoke**



**HW-05**

**Cast Iron 3 Spoke**



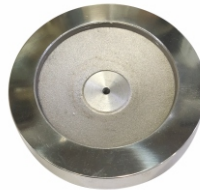
**HW-15**

**Aluminium 2 Spoke**



**HW-06**

**Aluminium Solid**



**HW-07**

**Gravity Indicator**



**HW-10**

**Gravity Indicator**



**HW-11**

**Position Indicator**



**HW-12**

**Gravity Indicator(Knob Type)**



**HW-13**

**Poly Lobed Knob**



**KB-01**

**Poly Round Knob**



**KB-02**

**Poly Star Knob**



**KB-03**

**Poly T-Shape Knob**



**KB-04**

**Poly Panel Block Knob**



**KB-07**

**S.S. Star Knob**



**KB-09**

**Poly Lobed Knob (OD 80mm)**



**KB-10**

**Poly Square Knob**



**KB-11**

**Poly Bracket Knob**



**KB-12**

**Bakelite knob (OD.80mm)**



**KB-13**

**Poly Cross Clamp**



**CR-01**

**Poly T-Clamp**



**CR-02**

**Poly Single Rod Guide**



**CR-03**

**Poly Two Rod Guide**



**CR-04**

**Poly Side Bracket**



**CR-05**

**Small Bracket 130mm**



**CR-101**

**Small Bracket 140mm**



**CR-102**

**Side Bracket 150mm**



**CR-103**

**Side Bracket 200mm**



**CR-104**

**Swivel Bracket 200mm**



**CR-105**

**Single Clamp**



**CR-109**

**Double Clamp 40mm**



**CR-112**

**Double Clamp 68mm**



**CR-113**

**Single Clamp**



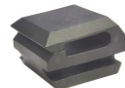
**CR-114**

**Single Rod Guide**



**CR-121**

**Drip tray Holder**



**CR-122**

**Support Base (Bi-Pod)**



**CR-201**

**Support Base (Bi-Pod)**



**CR-202**

**Support Base (Tri-Pod)**



**CR-203**

**Drip Tray Supports**



**CR-252**

**Fixing Washer**



**CR-338**

**Clamp For Sensor**



**CR-341**

**Connecting Joints**



**CR-501**

**Support Head**



**CR-502-A**

**Support Head**



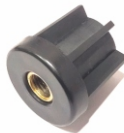
**CR-502-B**

**Side Mounting Bracket**



**CR-513**

**Round Tube Ends**



**CR-708**

**Square Tube Ends**



**CR-710**



**Poly Base 32mm**



**LP-01**

**Poly Base 60mm**



**LP-02**

**Poly Base 80mm**



**LP-03**

**Poly Base 100mm**



**LP-04**

**Poly Base 100mm**



**LP-05**

**Metal Leveling Pad**



**MLP-01**

**Metal Leveling Pad**



**MLP-02**

**Metal Leveling Pad**



**MLP-04**

**Metal Leveling Pad**



**MLP-05**

**Metal Leveling Pad**



**MLP-06**

**Metal Leveling Pad**



**MLP-07**

**Metal Leveling Pad**



**MLP-08**

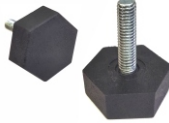
**Foot Mount (OD 38)**



*New*

**FM-03**

**Hexagon Foot Mount**



*New*

**FM-04**

**Conical Foot Mount**



*New*

**FM-05**

**Plastic Foot Mount**



*New*

**FM-06**

**Square Foot Mount**



*New*

**FM-07**

**Plastic Foot Mount**



*New*

**FM-08**

**Round Foot Mount**



*New*

**FM-09**

**Rubber Foot Mount**



*New*

**FM-10**

**Round Foot Mount**



*New*

**FM-11**

**Hexagonal Foot Mount**



*New*

**FM-12**

**Foot Mount (Rubber)**



*New*

**FM-13**

**Poly Foot Mount**



*New*

**FM-14**

**P.U. Red Swivel & Brake**



**CW-02**

**P.U. Orange/Black Swivel & Brake**



**CW-03**

**P.P. White Swivel & Brake**



**CW-05**

**Aluminium Foot Castor**



**CW-10**



2025

Your toolkit for business



Unit No. 20, 1st Floor,

Building No. 16/A, Samhita Complex,

Telephone Exchange Lane, Sakinaka, Mumbai- 72.



(+91) 9321105302, 9321218985



sales@channelindustries.in



www.channelindustries.in

